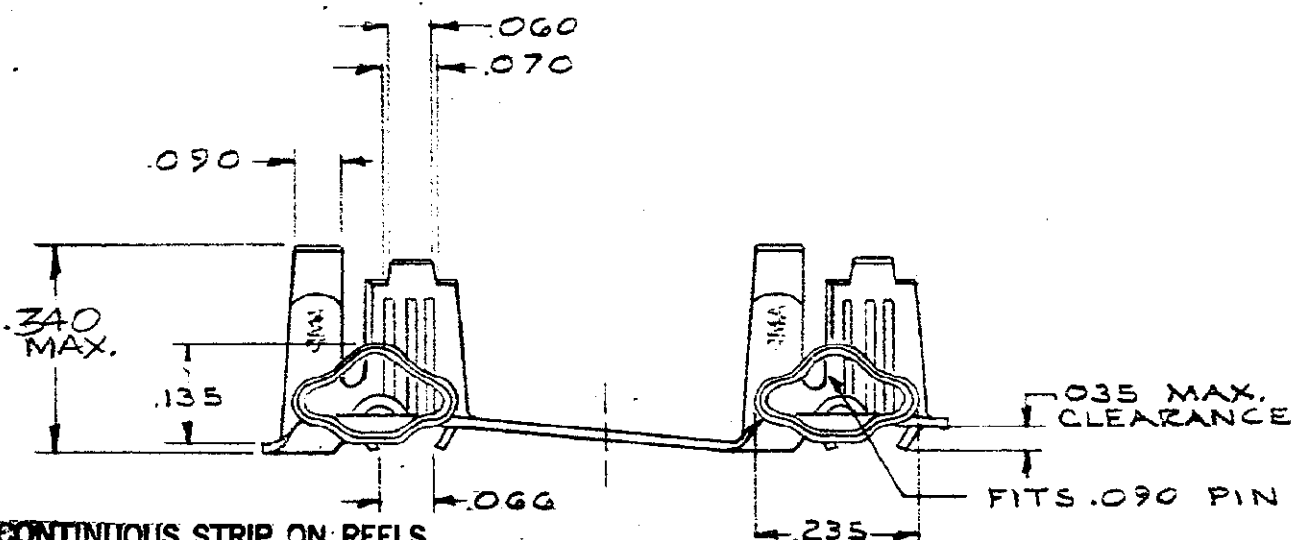
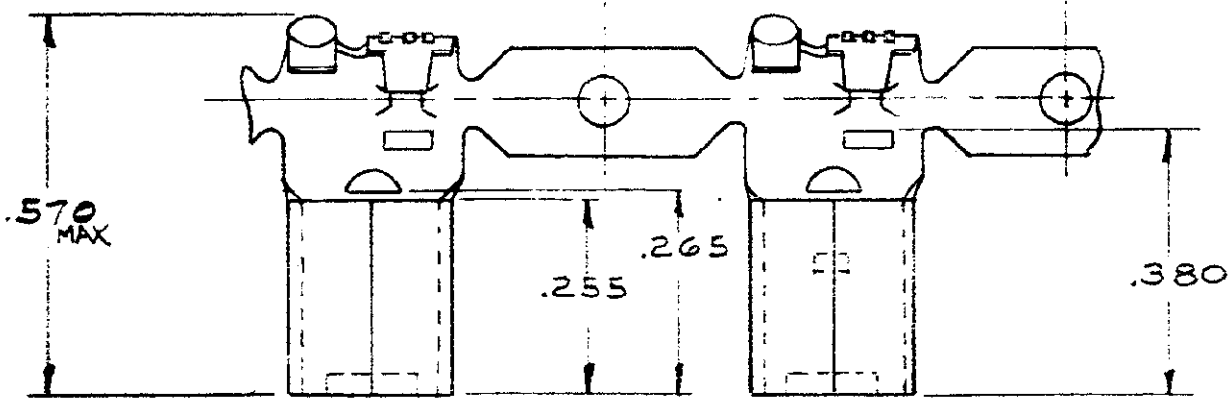


DRAWING MADE IN AMERICAN PROJECTION

NUMBER
60376



CONTINUOUS STRIP ON REELS

PART NUMBER	MATERIAL - FINISH
60376-1	.018 PHOS. BRONZE - TIN
-2	.018 BE. COPPER - NONE
-3	.018 BE. COPPER - TIN
	OBsolete

DIMENSIONS IN INCHES. DO NOT SCALE PRINT.

C DES-3 AF-2707 B REV .570 WAS .560 A REVISED AF 0580 REMOVED FROM 42745				©1971 BY AMP INCORPORATED. ALL RIGHTS RESERVED. AMP PRODUCTS COVERED BY PATENTS AND/OR PATENTS PENDING.				CUSTOMER COPY REFERENCE ONLY			
MATERIAL AND FINISH								AMP INCORPORATED HARRISBURG, PENNA.			
WIRE RANGE INSULATION 20 #14 120-170				CLASS <u>N</u>				TYPE <u>N</u>			
TOLERANCE EXCEPT AS NOTED = .015 ± 1° 0				SCALE <u>N</u>				LOC AF A NO 60376 REV C			
NAME 090 PIN RECEPTACLE, FLAG											